



# AUGUST 2023



Sunday	Monday	Tuesday	Wednesday	Thursday	Friday	Saturday
		1	2	3	4	5
<b>WELCOME TO THE 2023-2024 SCHOOL YEAR!</b>						
6	7	8	9	10	11	12
13	14 Meet & Greet Event 12:00 pm - 3:00 p.m.	15	16	17 Back to School First Day of School! 1st 9 Weeks Begins	18	19
20	21	22	23 Wednesday Dismissal 1:50pm Grades PK-5	24	25 Return signed Code of Student Contact Form	26
<b>Carefully review our Green Communicator for important information</b>						
27	28	29 Open House Grades PK-2 5:30pm-6:15pm Grades 3-5 6:30pm-7:15pm 	30 Wednesday Dismissal 1:50pm Grades PK-5	31 		

## Important Reminders:

- Please ensure you have updated your current email with our main office to receive pertinent school information via our CPE Communicator.
- Students are expected to be in uniform daily. Please refer to our School Uniform flyer for specifics.
- Sign & Return Emergency Contact Form and other classroom forms no later than Friday, August 25th.
- Mobile devices are available for students to check-out at: <https://securranty.com/dadeschools>
- Enroll for student insurance at [www.K12StudentInsurance.com](http://www.K12StudentInsurance.com)

Visit our school website at: [coralparkelementary.net](http://coralparkelementary.net)

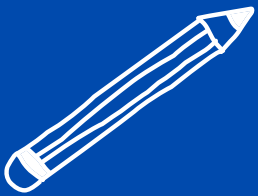




# *CORAL PARK ELEMENTARY* *2023-2024*

## *Open House*

123



SAVE THE DATE



AUGUST 29, 2023

Grades PK-2nd: 5:30 P.M. - 6:15 P.M.

Grades 3-5: 6:30 P.M. - 7:15 P.M.





# CORAL PARK ELEMENTARY

## School Uniforms

### Welcome to the 2023-2024 School Year

Coral Park Elementary School is a mandatory uniform school. Students are required to wear uniforms to school every day. The selected school uniform options may be purchased from a variety of sources, such as uniform companies, department/retail stores and catalogs.

### School Logo



### Uniform Shirt

\*White or Navy



### Uniform Bottoms

\*Khaki or Navy



Pants



Shorts



Skirts/Skorts

### Dresses & Jackets

\*Navy ONLY



Polo Dress



Full-Zippered Jacket

For the safety of our students, the following items are not part of our school uniform:



Hoodies



Crocs or Sandals



Jeans, Leggings, or Sweatpants



Caps/Visors



Printed/Multi-colored Sweater



Platform shoes or "Wheelie" sneakers





# Miami-Dade County Public Schools

*giving our students the world*

## Superintendent of Schools

Dr. Jose L. Dotres

## Miami-Dade County School Board

Mari Tere Rojas, Chair

Danny Espino, Vice Chair

Roberto J. Alonso

Lucia Baez-Geller

Dr. Dorothy Bendross-Mindingall

Mary Blanco

Monica Colucci

Dr. Steve Gallon III

Luisa Santos

August 17, 2023

Dear Parent/ Guardian:

Welcome to Coral Park Elementary School and the 2023-2024 school year! It is an exciting new year where we welcome all our students back on campus and encourage our entire school community to

*Spread Your Wings...Together we will reach the stars!*

I would like to take this opportunity to express my gratitude for your continued dedication and support to our staff, students, and community. Your collaboration is an integral part of our students' academic success.

Additionally, I would like to remind you of our arrival and dismissal procedures. Please carefully review the information below and thank you in advance for your continued support and assistance to ensure that students are dismissed in a safe and orderly manner.

### Arrival:

- Supervision is available at 7:45 a.m., at which time students may be dropped off at school. School breakfast is also available at this time at no cost to students.
- Students should be seated and ready to learn no later than 8:20 a.m. for Grades PK-1, and no later than 8:35 a.m. for Grades 2-5.
- Arrival via the car-line drop-off areas, on 97<sup>th</sup> Avenue and on 12<sup>th</sup> Street are solely for pass-through, drop-off purposes.
- Staff supervision is available on 97<sup>th</sup> Avenue and 12<sup>th</sup> Street to facilitate the process.
- Parents **should not park or exit** from their vehicles in these areas to help ensure the safety of all students.

### Dismissal:

- Dismissal times for grades Pre-K, Kindergarten and Grade 1 is at 1:50 p.m., Monday-Friday.
- Grades 2-5 students are dismissed at 3:05 p.m. daily, except Wednesdays.
- All Pre-K-Grades 5 students are dismissed at 1:50 p.m. on Wednesdays.
- Students riding a bus are dismissed on 97<sup>th</sup> Avenue and parent pick-up students are dismissed on 12<sup>th</sup> Street.
- Parents using the parent pick-up drive-through area are to **REMAIN** in their vehicles.
- Teachers and staff are stationed in these dismissal areas to assist students and help expedite the dismissal process in a safe and orderly manner.
- **Parking or stopping in surrounding streets and/or sidewalks is strictly prohibited.**

**Please be mindful of our neighbors' properties and refrain from parking on their lawns and/or blocking their driveways. We strive to be good neighbors and value our neighboring community's support of our great school. We need your help to ensure this partnership continues to shine.**

I thank you in advance for your cooperation with these procedures. They have been designed for the safety, security, and well-being of our students, staff, parents, and neighboring school community.

Respectfully,

*Dr. Marlene Leyte-Vidal*

Dr. Marlene Leyte-Vidal  
Principal

*Coral Park Elementary • 1225 S.W. 97<sup>th</sup> Avenue • Miami, Florida 33174  
305-221-5632 • coralparkelementary.net*

# Coral Park Elementary

## Important Arrival & Dismissal Reminders:



2023-2024

- Our School Hours are:
  - PK-1: 8:20 am - 1:50 pm
  - Gr. 2-5: 8:35 am - 3:05 pm
  - PK-5: Wednesday Dismissal at 1:50 pm
- Arrival Procedures:
  - Vehicle Drop off Area - 12th Street
  - ONLY Pre-K & K Walkers will be allowed in (with pass) to drop off at the Pre-K Gate via the 12th Street Gate Entrance
- Dismissal Procedures:
  - Main Gate (97th Avenue) - Bus & Story Time Entrance
  - North Gate A (12th Street, West End) - K -2nd Grade
  - North Gate D (12th Street, Basketball Courts) - PK & 3rd - 5th Grade
  - ONLY Pre-K Walkers will be allowed in (with pass) to pick-up at the Pre-K Gate
  - Rainy Day Procedures:
    - Parents may walk to inner gates through Gate A and Gate D to pick up walker students with umbrellas/ rain gear.
    - Driving parents will proceed as usual through car lane





# Coral Park Elementary

## DISMISSAL

Map

2022-2023

Coral Park Elementary School



Main Entrance - BUS

Covered Walkway

Gate D  
3<sup>rd</sup> – 5<sup>th</sup>  
Walkers

Carline  
Drive-Thru

Gate A  
PK-2<sup>nd</sup>  
Walker

Sidewalk

12<sup>th</sup> Street

Faculty/ Staff Parking Lot

### Dismissal Schedule

Primary Grades  
PK-1<sup>st</sup> Grade  
1:50 p.m.

Upper Elementary  
2<sup>nd</sup> – 5<sup>th</sup> Grade  
3:05 p.m.

**\*\*Wednesday Dismissal\*\***  
PK – 5<sup>th</sup>  
1:50 p.m.

Sidewalk



97<sup>th</sup> Avenue



# CHECK ONE OUT TODAY!

**INSURE IT, SIGN IT OUT, &  
PICK UP A LAPTOP AT YOUR SCHOOL  
FOR THE 2023-2024 SCHOOL YEAR**





## Mobile Device Check Out

### STEP 1: INSURE IT

#### SECURRANTY

To safeguard your device, we encourage that you purchase insurance for your device. District technology fees are waived for students purchasing insurance through Securranty.

<https://securranty.com/dadeschools>

Confirm with your school on the available mobile device model.



Select a model, available plan and additional options then click "Add to cart"

Fill out your billing and payment information and click "Complete Purchase"

### STEP 2: SIGN IT OUT

Parents will need to sign the Mobile Device Agreement form. Once signed, the school can check out the device to your student.

<https://innovationschoolchoice.com/mobile-device-agreement/>



Enter your Student ID and click "LOOKUP". When the student is found click on the "View the policy here" link within the green box.

Review and scroll down the page to agree and fill out the form and click the "SUBMIT" button.

### STEP 3: PICK IT UP

Students should check with the main office at their school and ask to speak with the school's Asset Manager. The Asset Manager will be able to verify that insurance has been paid (you might want to take proof of insurance just to make things move faster) and that the Mobile Device Agreement has been signed! Pick up your device with the charger.

Remember to log in once at school before taking the device home!

### STEP 4: CONFIRM & TAKE IT HOME

You will receive a receipt via your student email once you have checked out your device. Confirm that the device provided to you matches the information in the receipt and keep this receipt in your email as a record of the device that was checked out to you in the event that the device is lost, stolen, or damaged. Students can also log in to the District's Asset Management System: IncidentIQ to check on any asset assigned to them.



<https://dadeschools.incidentiq.com/>





## OUR CHILDREN



Research shows that participating in your child's school and showing engagement helps them perform better academically

## OUR SCHOOL



The PTA supports teachers, administration, and staff which ultimately creates a positive and caring atmosphere in the school.

## MAKE CONNECTIONS



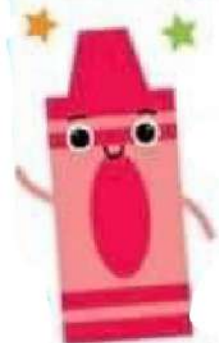
Get to know the teachers and staff in your community and make life-long friends with parents of the school.

## IT'S GOOD FOR YOU



Volunteering to help at your child's school is fun, helpful, and rewarding!

## SIGN UP TODAY!







# BENEFICIOS DE SER MIEMBRO DEL PTA



## NUESTROS NIÑOS



Los estudios muestran que la participación de padres en actividades escolares aumenta el éxito de los estudiantes.

## NUESTRA ESCUELA



Los padres involucrados entienden los desafíos que las escuelas enfrentan y trabajan en colaboración con líderes escolares para encontrar soluciones.

## HAZ CONEXIONES



Únete a una red de padres, maestros y líderes escolares quienes están construyendo relaciones, hablando sobre los desafíos y compartiendo ideas.

## TODOS GANAN



La misión del PTA es hacer el potencial de cada niño una realidad al involucrar y empoderar a familias y comunidades para abogar por el éxito de todos los niños.

## ¡INSCRIBETE HOY!

